



PMS5005 Firmware Upgrade User Manual

Dr Robot®

Version: 1.0.6

Feb. 2004

Table of Contents

I. Procedure to upgrade the PMS5005 firmware	2
--	---

I. Procedure to upgrade the PMS5005 firmware

1. Download and save the latest PMS5005 firmware from www.DrRobot.com
2. Turn off PMS5005 and keep it off until step 9
3. Use a null modem cable to connect the PC to PMS5005 with a RS232 Interface Module (MCR3210) as shown in Figure I.1. All peripheral modules (e.g. sensors, motors, LCD and etc.) can still be plugged to the PMS5005 without affecting the upgrade process

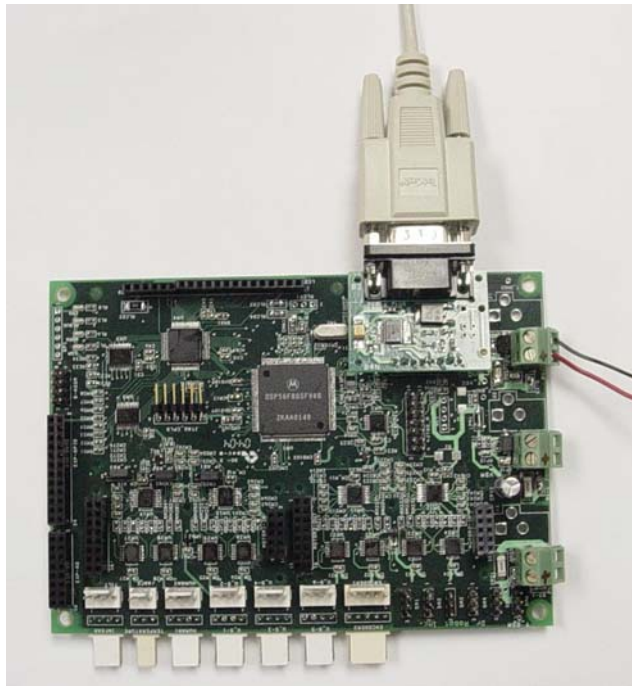


Figure I.1 Physical Connection

4. Close all WiRobot software on PC (e.g. WiRobot Gateway and all sample applications)
5. Start the hyper-terminal (which comes with MS Windows OS), give a name to this new connection and choose the COM port that is connected to the PMS5005 (normally COM1 or COM2) as shown in the following figure:

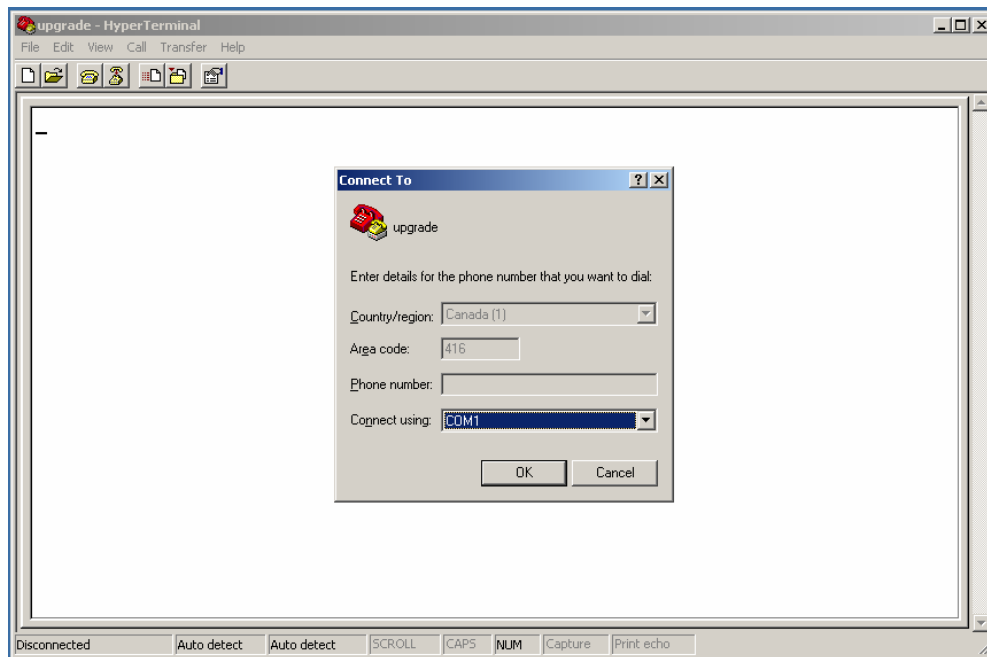


Figure I.2 Choosing COM Port Connection

6. Configure the COM port with the setting 115200, 8, N, 1, Xon/Xoff and turn on the “Echo typed characters locally” under Properties -> Settings -> ASCII Setup. If your PC is slow, you can turn off this “echo” option for shorter download time but you will not see the download process during the upgrade.

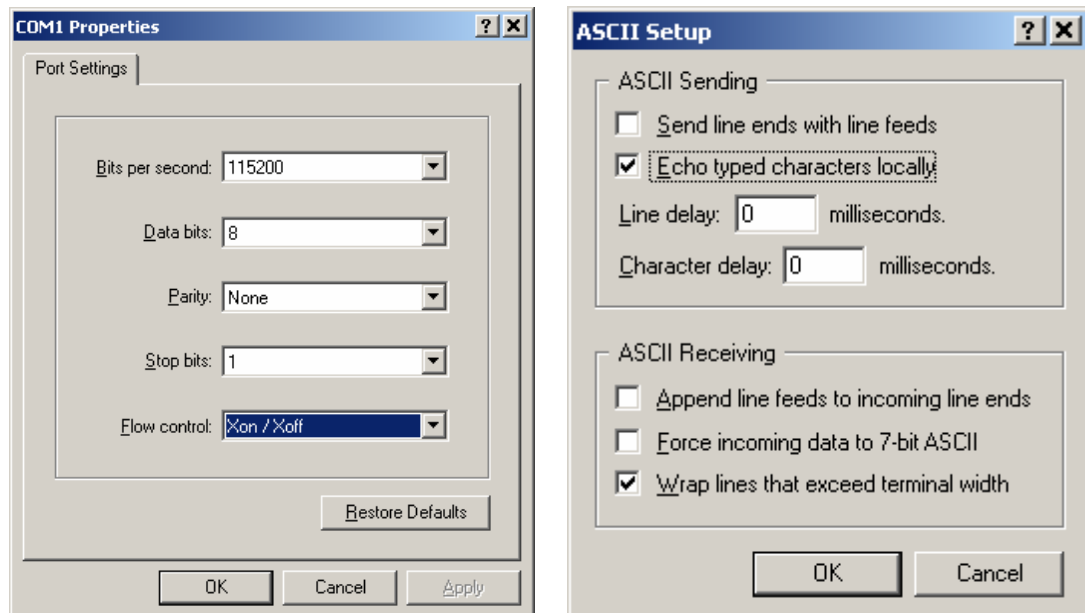


Figure I.3 COM Port Setting

7. The lower left corner of the hyper-terminal will show the connection status. If the hyper-terminal is still not connected, click the connect icon on the hyper-terminal to establish the connection (don't turn on the PMS5005 yet!).
8. Choose "Transfer -> Send Text File" from the toolbar and set "files of type" to ALL. Locate the PMS5005 firmware HEX file only by HIGHLIGHTING the file (e.g. PMS5005_v11.dri). Please make sure that you DON'T double click the file or click the "Open" button

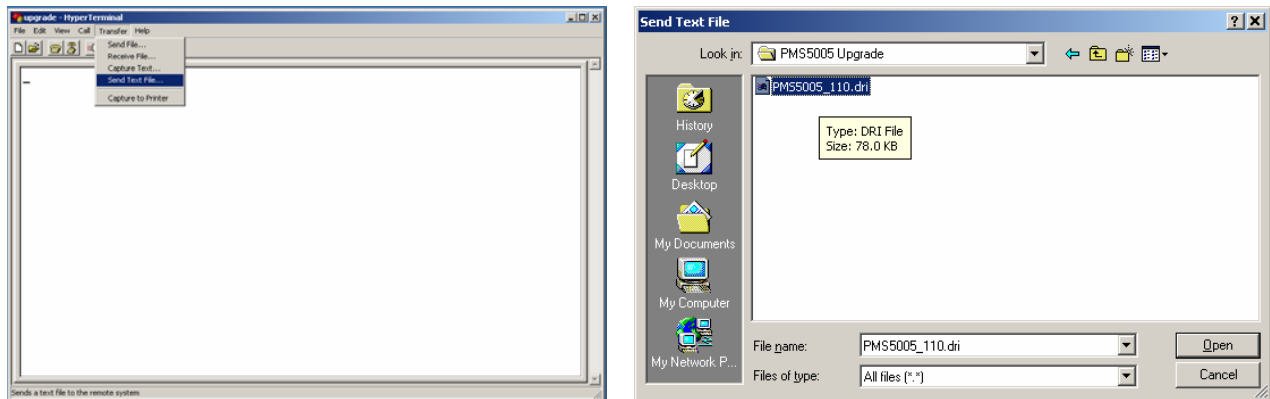


Figure I.4 Locating the HEX File

9. Please read step 10-13 ahead before turning on the PMS5005 in this step
10. After you turn on the PMS5005 (by connecting power to the system power), you should see the text "(c) 2000-2001 Motorola Inc. S-Record loader. Version 1.1" in the hyper-terminal as shown in the following figure:

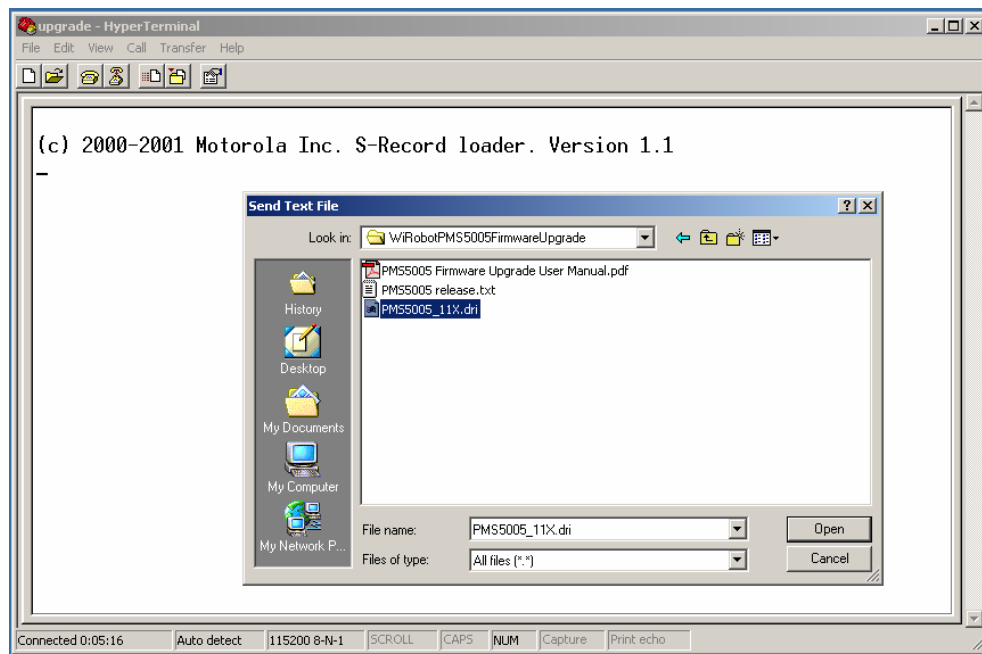


Figure I.5 Status after Turning on the PMS5005

- [illegible]

13. When the download is finished, you could disconnect the COM connection in the hyper-terminal, and re-start your PMS5005